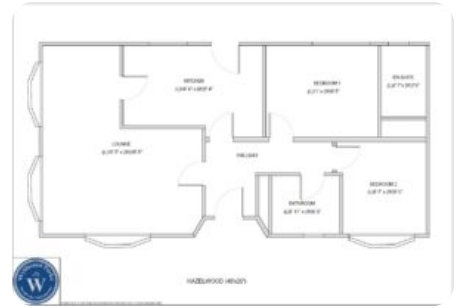




Willerby Hazelwood on Saltmarshe Castle Park



Price £204,995

Size 40 X 20 | 2 Bedroom(s) | 2 Bathroom(s)

Home Features

- Fully furnished
- Large bay windows
- 2 good sized double bedrooms
- En-suite shower room off master bedroom
- Semi-open plan living
- Fully fitted kitchen with integrated appliances

Park Features

- Stunning Rural Location
- Hair Salon on Park
- Self-Service Laundry Machines
- Club House with Bar and Restaurant
- Motorhome & Caravan Storage Facility
- Playpark for Small Visitors

Please contact us for more information on our park homes for sale.



Available at: **Saltmarshe Castle Park, Bromyard, Herefordshire**

Call today to arrange your viewing

0330 133 7300

View all our available homes online

wyldecrestparks.co.uk



Contact Us:

0330 133 7300

enquiry@wyldecrestparks.com

Wyldecrest House, 857 London Road,
West Thurrock, Essex, RM20 3AT