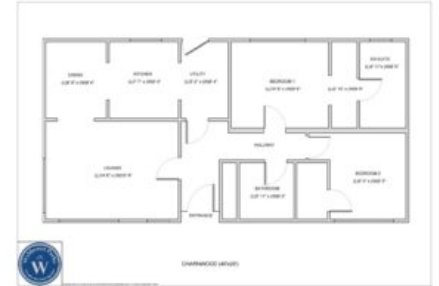




Willerby Charnwood on Rookery Drove Park, Suffolk



Price £149,995

Size 40 X 20 | 2 Bedroom(s) | 2 Bathroom(s)

Home Features

- 2 double bedrooms
- Ensuite shower room to master bedroom
- Walk in Wardrobe and fitted bedroom furniture
- Spacious living accommodation
- Fully Furnished
- Fully fitted kitchen with integrated appliances

Park Features

- Good transport links to A11 and A14
- Quiet rural village location
- Gated community with Cctv for added security
- Feature pond to centre of park
- On site office
- Fully residential park

Please contact us for more information on our park homes for sale.



Available at: **Rookery Drove Park, Bury St Edmunds, Suffolk**

Call today to arrange your viewing

0330 133 7300

View all our available homes online

wyldecrestparks.co.uk



Contact Us:

0330 133 7300

enquiry@wyldecrestparks.com

Wyldecrest House, 857 London Road,
West Thurrock, Essex, RM20 3AT